




<b>Prüfbericht-Nr.:</b> <i>Test Report No.:</i>	<b>50065637 001</b>	<b>Auftrags-Nr.:</b> <i>Order No.:</i>	154216270	Seite 1 von 4 Page 1 of 4
<b>Kunden-Referenz-Nr.:</b> <i>Client Reference No.:</i>	N/A	<b>Auftragsdatum:</b> <i>Order date:</i>	13.12.2016	
<b>Auftraggeber:</b> <i>Client:</i>	Glorious International Industrial Co., LTD. Flat/RM B07, 23/F, Hover Industrial Building, No. 26-38 Kwai Cheong Road, NT			
<b>Prüfgegenstand:</b> <i>Test item:</i>	Utility Lighter			
<b>Bezeichnung / Typ-Nr.:</b> <i>Identification / Type No.:</i>	ULG-6020			
<b>Auftrags-Inhalt:</b> <i>Order content:</i>	Mechanical Safety Test acc. client's request			
<b>Prüfgrundlage:</b> <i>Test specification:</i>	ISO 22702:2003+A1:2008 Utility lighters General Consumer-Safety Requirements			
<b>Wareneingangsdatum:</b> <i>Date of receipt:</i>	13.12.2016			
<b>Prüfmuster-Nr.:</b> <i>Test sample No.:</i>	A000473558			
<b>Prüfzeitraum:</b> <i>Testing period:</i>	13.12.2016 - 11.01.2017			
<b>Ort der Prüfung:</b> <i>Place of testing:</i>	TÜV Rheinland (Shanghai) Co., Ltd.			
<b>Prüflaboratorium:</b> <i>Testing laboratory:</i>	TÜV Rheinland (Shanghai) Co., Ltd.			
<b>Prüfergebnis*:</b> <i>Test result*:</i>	Pass			
<b>geprüft von / tested by:</b>		<b>kontrolliert von / reviewed by:</b>		
11.01.2017 Johnny Shen / PE		11.01.2017 Rainbow Wang / Reviewer		
<b>Datum</b> <i>Date</i>	<b>Name / Stellung</b> <i>Name / Position</i>	<b>Unterschrift</b> <i>Signature</i>	<b>Datum</b> <i>Date</i>	<b>Name / Stellung</b> <i>Name / Position</i>
				<b>Unterschrift</b> <i>Signature</i>
<b>Sonstiges / Other:</b> Remark: According to client's request, the evaluation of ISO 22702:2003+A1:2008 Clause 6 & 8 is not performed.				
<b>Zustand des Prüfgegenstandes bei Anlieferung:</b> <i>Condition of the test item at delivery:</i>		Prüfmuster vollständig und unbeschädigt <i>Test item complete and undamaged</i>		
* Legende: 1 = sehr gut 2 = gut 3 = befriedigend 4 = ausreichend 5 = mangelhaft P(ass) = entspricht o.g. Prüfgrundlage(n) F(ail) = entspricht nicht o.g. Prüfgrundlage(n) N/A = nicht anwendbar N/T = nicht getestet		Legend: 1 = very good 2 = good 3 = satisfactory 4 = sufficient 5 = poor P(ass) = passed a.m. test specification(s) F(ail) = failed a.m. test specification(s) N/A = not applicable N/T = not tested		
<p><b>Dieser Prüfbericht bezieht sich nur auf das o.g. Prüfmuster und darf ohne Genehmigung der Prüfstelle nicht auszugsweise vervielfältigt werden. Dieser Bericht berechtigt nicht zur Verwendung eines Prüfzeichens.</b>  <i>This test report only relates to the a. m. test sample. Without permission of the test center this test report is not permitted to be duplicated in extracts. This test report does not entitle to carry any test mark.</i></p>				

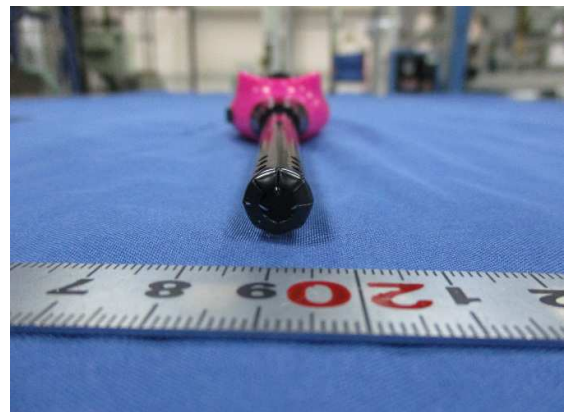
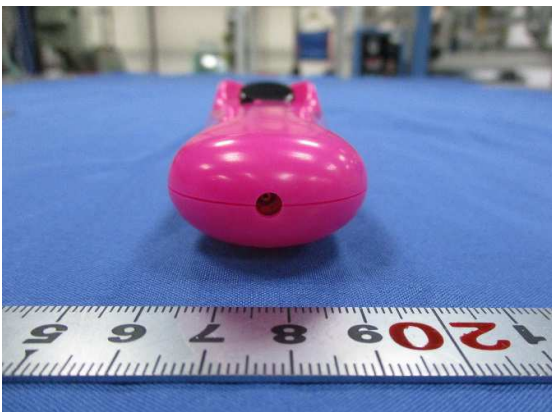


Prüfbericht-Nr.: 50065637 001  
Test Report No.:

Seite 3 von 4  
Page 3 of 4

**Produktbeschreibung**  
**Product description**

1	<b>Produktdetails</b> <i>Product details</i>	Utility Lighter
2	<b>Maße / Gewicht</b> <i>Dimensions / Weight</i>	/



**Prüfbericht-Nr.: 50065637 001** Seite 4 von 4  
*Test Report No.:* Page 4 of 4

Absatz	ISO 22702:2003+A1:2008	Messergebnisse - Bemerkungen	Bewertung
Clause	Anforderungen - Prüfungen / Requirements - Tests	Measuring results - Remarks	Evaluation

1	<b>Scope</b>		
2	<b>Terms and definitions</b>		
3	<b>Functional requirements</b>		
3.1	<b>Flame generation</b>	Sample No. 1 to 15.	<b>Pass</b>
3.2	<b>Flame heights</b> Test method 7.1	Sample No. 1 to 15.	<b>Pass</b>
3.3	<b>Flame-height adjustment</b>	Sample No. 1 to 15.	<b>Pass</b>
3.4	<b>Resistance to spitting or sputtering and flaring</b> Test method 7.2	Sample No. 1 to 15.	<b>Pass</b>
3.5	<b>Flame extinction</b> Test method 7.3	Sample No. 1 to 15.	<b>Pass</b>
3.6	<b>Volumetric displacement</b> Test method 7.11	Sample No. 16, 17, 18.	<b>Pass</b>
4	<b>Structural-integrity requirements</b>		
4.1	<b>General</b>	See details from 4.1 to 4.9	<b>Pass</b>
4.2	<b>Resistance to dropping</b> Test method 7.4	Sample No. 1 and 2 after normal stabilizing. Sample No. 3 and 4 after cold stabilizing.	<b>Pass</b>
4.3	<b>Resistance to elevated temperature</b> Test method 7.5	Sample No. 5, 6, 7.	<b>Pass</b>
4.4	<b>Burning behaviour</b>	Sample No. 19, 20.	<b>Pass</b>
4.5	<b>Resistance to continuous burn</b> Test method 7.6	Sample No. 8, 9.	<b>Pass</b>
4.6	<b>Resistance to cyclic burn</b> Test method 7.7	Sample No. 10, 11, 12.	<b>Pass</b>
4.7	<b>External finish</b>	Sample No. 1 to 15.	<b>Pass</b>
4.8	<b>Compatibility with fuel</b> Test method 7.8	Sample No. 13, 14, 15.	<b>Pass</b>
4.9	<b>Resistance to internal pressure</b> Test method 7.9	Sample No. 21, 22.	<b>Pass</b>
5	<b>Refilling of utility lighters</b> Test method 7.10	Sample No. 23, 24, 25.	<b>Pass</b>
6	<b>Instructions and warnings</b>		
6.1	<b>Safety information</b>		<b>N/T</b>
6.2	<b>Refilling instructions</b>		<b>N/T</b>
7	<b>Test methods</b>		
8	<b>Product marking</b>		<b>N/T</b>

END OF TEST REPORT