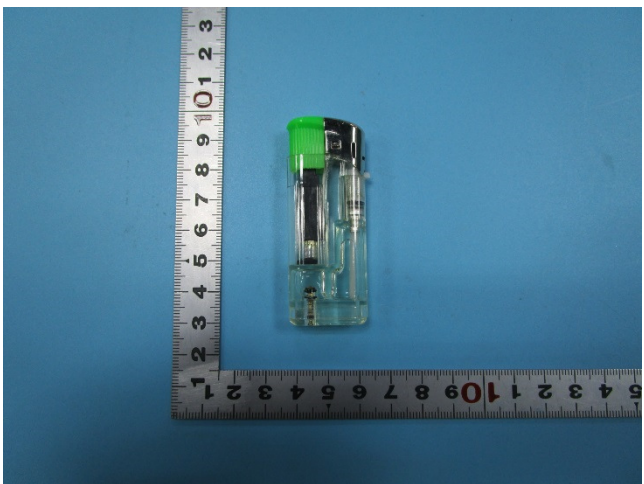




<b>Prüfbericht-Nr.:</b> <i>Test Report No.:</i>	50082847 001	<b>Auftrags-Nr.:</b> <i>Order No.:</i>	154248644	Seite 1 von 4 <i>Page 1 of 4</i>	
<b>Kunden-Referenz-Nr.:</b> <i>Client Reference No.:</i>	N/A	<b>Auftragsdatum:</b> <i>Order date:</i>	15.05.2017		
<b>Auftraggeber:</b> <i>Client:</i>	Glorious International Industrial Co., LTD. Flat/RM B07, 23/F, Hover Industrial Building, No. 26-38 Kwai Cheong Road, NT				
<b>Prüfgegenstand:</b> <i>Test item:</i>	Lighter				
<b>Bezeichnung / Typ-Nr.:</b> <i>Identification / Type No.:</i>	3KD128-1				
<b>Auftrags-Inhalt:</b> <i>Order content:</i>	Mechanical Safety Test acc. client's request				
<b>Prüfgrundlage:</b> <i>Test specification:</i>	EN ISO 9994:2006+A1:2008 Lighters - Safety Specification				
<b>Wareneingangsdatum:</b> <i>Date of receipt:</i>	15.05.2017				
<b>Prüfmuster-Nr.:</b> <i>Test sample No.:</i>	A000545630-001~005				
<b>Prüfzeitraum:</b> <i>Testing period:</i>	15.05.2017 - 15.06.2017				
<b>Ort der Prüfung:</b> <i>Place of testing:</i>	TÜV Rheinland (Shanghai) Co., Ltd.				
<b>Prüflaboratorium:</b> <i>Testing laboratory:</i>	TÜV Rheinland (Shanghai) Co., Ltd.				
<b>Prüfergebnis*:</b> <i>Test result*:</i>	Pass				
<b>geprüft von / tested by:</b>		<b>kontrolliert von / reviewed by:</b>			
15.06.2017	Johnny Shen / PE	15.06.2017	Kevin Zhai / Reviewer		
<b>Datum</b> <i>Date</i>	<b>Name / Stellung</b> <i>Name / Position</i>	<b>Unterschrift</b> <i>Signature</i>	<b>Datum</b> <i>Date</i>	<b>Name / Stellung</b> <i>Name / Position</i>	<b>Unterschrift</b> <i>Signature</i>
<b>Sonstiges / Other:</b> Remark: According to client's request, the evaluation of EN ISO 9994:2006+A1:2008 Clause 6 & 7 is not performed.					
<b>Zustand des Prüfgegenstandes bei Anlieferung:</b> <i>Condition of the test item at delivery:</i>		Prüfmuster vollständig und unbeschädigt <i>Test item complete and undamaged</i>			
* Legende: 1 = sehr gut    2 = gut    3 = befriedigend    4 = ausreichend    5 = mangelhaft P(ass) = entspricht o.g. Prüfgrundlage(n)    F(ail) = entspricht nicht o.g. Prüfgrundlage(n)    N/A = nicht anwendbar    N/T = nicht getestet					
Legend: 1 = very good    2 = good    3 = satisfactory    4 = sufficient    5 = poor P(ass) = passed a.m. test specification(s)    F(ail) = failed a.m. test specification(s)    N/A = not applicable    N/T = not tested					
<b>Dieser Prüfbericht bezieht sich nur auf das o.g. Prüfmuster und darf ohne Genehmigung der Prüfstelle nicht auszugsweise vervielfältigt werden. Dieser Bericht berechtigt nicht zur Verwendung eines Prüfzeichens.</b> <i>This test report only relates to the a. m. test sample. Without permission of the test center this test report is not permitted to be duplicated in extracts. This test report does not entitle to carry any test mark.</i>					

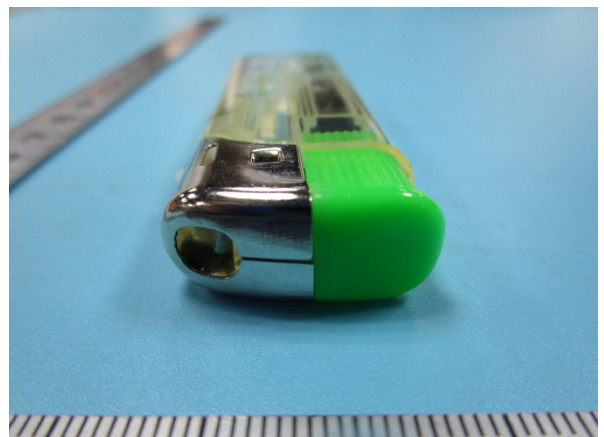
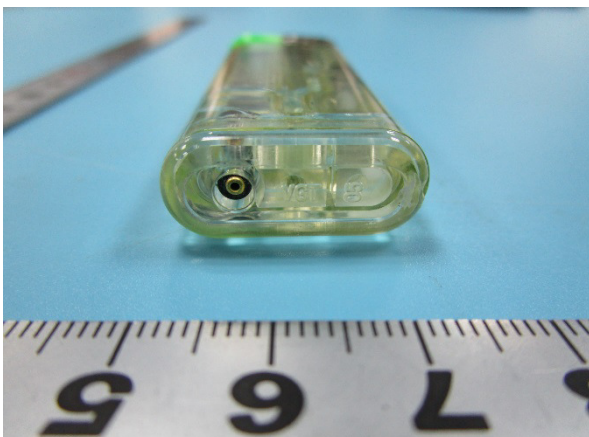
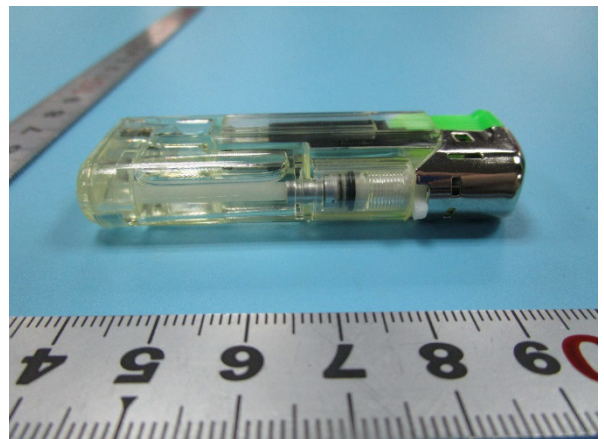
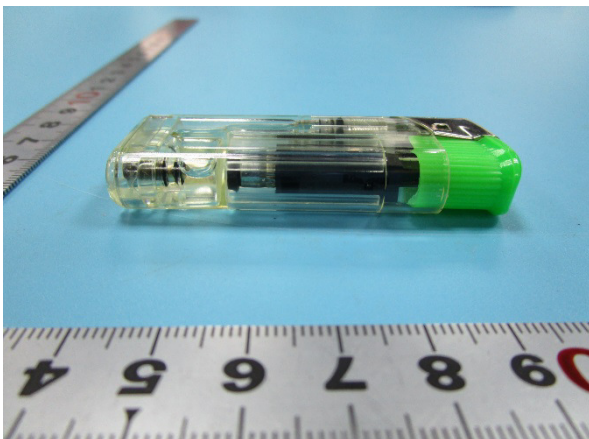
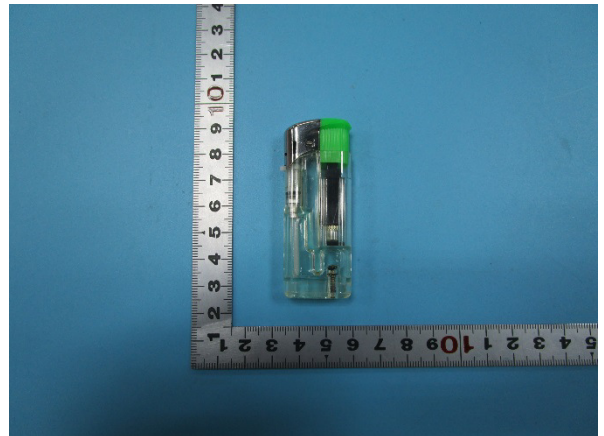
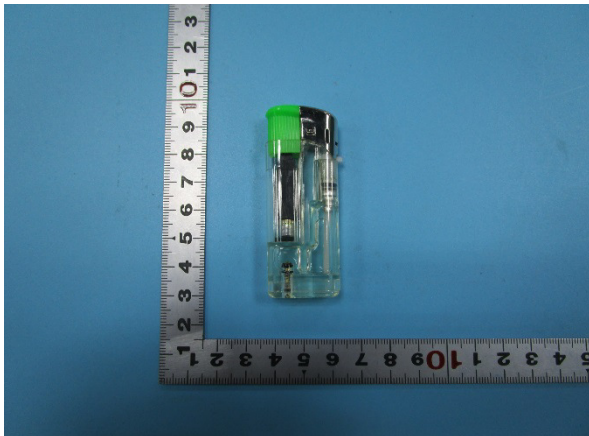


Prüfbericht-Nr.: 50082847 001  
Test Report No.:

Seite 3 von 4  
Page 3 of 4

**Produktbeschreibung**  
**Product description**

<b>1</b> <b>Produktdetails</b> <i>Product details</i>	Lighter
<b>2</b> <b>Maße / Gewicht</b> <i>Dimensions / Weight</i>	./.



**Prüfbericht-Nr.: 50082847 001** Seite 4 von 4  
*Test Report No.:* Page 4 of 4

Absatz	EN ISO 9994:2006+A1:2008	Messergebnisse - Bemerkungen	Bewertung
Clause	Anforderungen - Prüfungen / Requirements - Tests	Measuring results - Remarks	Evaluation

<b>1</b>	<b>Scope</b>		
<b>2</b>	<b>Terms and definitions</b>		
<b>3</b>	<b>Functional requirement</b>		
<b>3.1</b>	<b>Flame generation</b>	Sample No. 1 to 15.	<b>Pass</b>
<b>3.2</b>	<b>Flame heights</b> Test method 5.2	Sample No. 1 to 15.	<b>Pass</b>
<b>3.3</b>	<b>Flame-height adjustment</b>	Sample No. 1 to 15.	<b>Pass</b>
<b>3.4</b>	<b>Resistance to spitting or sputtering and flaring</b> Test method 5.3	Sample No. 1 to 15.	<b>Pass</b>
<b>3.5</b>	<b>Flame extinction</b> Test method 5.4	Sample No. 1 to 15.	<b>Pass</b>
<b>3.6</b>	<b>Volumetric displacement</b> Test method 5.7	Sample No. 16, 17, 18.	<b>Pass</b>
<b>4</b>	<b>Structural integrity requirements</b>		
<b>4.1</b>	<b>External finish</b>	Sample No. 1 to 15.	<b>Pass</b>
<b>4.2</b>	<b>Compatibility with fuel</b> Test method 5.5	Sample No. 1, 2, 3.	<b>Pass</b>
<b>4.3</b>	<b>Resistance to fuel loss</b> Test method 5.6	Sample No. 19, 20, 21.	<b>Pass</b>
<b>4.4</b>	<b>Resistance to drooping</b> Test method 5.8	Sample No. 4 and 5 after normal stabilizing. Sample No. 6 and 7 after cold stabilizing.	<b>Pass</b>
<b>4.5</b>	<b>Resistance to elevated temperature</b> Test method 5.9	Sample No. 8, 9, 10.	<b>Pass</b>
<b>4.6</b>	<b>Resistance to internal pressure</b> Test method 5.10	Sample No. 22 and 23.	<b>Pass</b>
<b>4.7</b>	<b>Burning behaviour</b>	Sample No. 24 and 25.	<b>Pass</b>
<b>4.8</b>	<b>Resistance to cyclic burning</b> Test method 5.11	Sample No. 11, 12, 13	<b>Pass</b>
<b>4.9</b>	<b>Resistance to continuous burning</b> Test method 5.12	Sample No. 14 and 15.	<b>Pass</b>
<b>5</b>	<b>Test methods</b>		
<b>6</b>	<b>Instructions and warnings</b>		
<b>6.1</b>	<b>General</b>		<b>N/T</b>
<b>6.2</b>	<b>Location</b>		<b>N/T</b>
<b>6.3</b>	<b>Content</b>		<b>N/T</b>
<b>6.4</b>	<b>Safety symbols</b>		<b>N/T</b>
<b>6.5</b>	<b>Refilling instructions</b>		<b>N/T</b>
<b>7</b>	<b>Product marking</b>		<b>N/T</b>

END OF TEST REPORT